



# Reopening Plan A

Town Hall Meeting 7/27/2020

# Scenario Planning for 2020-2021

\*Task Force of Lay, Medical, & Professional Leadership

Fully In-Person	Fully Online	Hybrid = <b>PLAN A</b>
CDC Guidelines	Zoom Classes	Medical Guidelines Limiting Exposure
NJ/Bergen County Guidelines	Synchronous Learning	Rotation Models Synchronous Learning
Prepared to Pivot to Online	Asynchronous Learning	Asynchronous Learning Social Emotional Learning
	Social Emotional Learning	Prepared to Pivot to Online



How do we safely deliver “The Ma’ayanot Experience” for our students?

## **Key Values:**

- ★ **Caring**
  - ★ **Warmth**
  - ★ **Connection**
  - ★ **Growth**
  - ★ **Excellence**
  - ★ **Community**
-

How do we safely deliver “The Ma’ayanot Experience” for our students?

# **Key Considerations:**

- ★ **Safety & Health**
  - ★ **Facilities**
  - ★ **Academics**
  - ★ **Student Life /  
Guidance**
-

## Factors (Potentially) Influencing Risk

Community Disease Prevalence  
Congregate Setting  
Closed Spaces

Screening  
Distance  
Barriers (masks, dividers)  
Level of susceptibility  
Environmental cleaning  
Hand hygiene  
Air filtration



Safety &  
Health

# Safety & Health

---

## Low Incidence Community

Health Screening

Hygiene/ Disinfection

Air Circulation

Closed Campus

Parent Meetings Online

## Preventing Spread

Masking

Social Distancing

Cohorting

Busing

Carpooling

## Social Emotional Health

Grade Bonding

Grade Teams & Programs

Outdoor Space / Time

Committees & Clubs

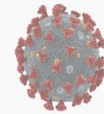
## Congregate Setting (low prevalence area)

$48/100,000 = 0.048\%$  of the population positive

School of 500 people = "0.24" positive people likely\*

In a class of 20, there is a  $0.24/25$  chance (0.96%) that any individual student is exposed to infected person

If students move through 5 groups of 20, there is a  $0.24/5$  (4.8%) chance that an individual student is exposed to infected person



*\*Assumes equal prevalence of disease among all age groups*

**Safety &  
Health:**

**LPA**

**Cohorting**



**MA'AYANOT**  
**מעירות**



“Wearing a mask is “one of the most urgent things we can do to get our country under control,” said Melanie Ott, director of the Gladstone Institute of Virology. “We’re all waiting for the vaccine, we’re waiting for therapeutics, and we’re not there.”

“The study found that aerosol-size droplets expelled from the mannequin with the double-layered cotton mask traveled forward about 2.5 inches on average, and that most of the leakage escaped from gaps between the nose and face. Loosely fitting facial coverings, including a folded cotton handkerchief with ear loops, as well as a bandanna were less helpful, the study found. With those masks, droplets traveled on average about 1.25 and 3.5 feet, respectively. In contrast, the study found droplets traveled about 8 inches on average with an off-the-shelf cone-shaped mask.

“Experts caution that widespread masking doesn’t eliminate the need to follow other recommendations, like frequent handwashing and social distancing.”

<https://www.wsj.com/articles/face-masks-really-do-matter-the-scientific-evidence-is-growing-11595083298>

**Safety &  
Health:**

**Masking  
Vs  
Social  
Distancing**



# Ma'ayanot Reopening Task Force: Health & Safety, Academics, SEL

---

## Campus Readiness

New Spaces/Classrooms  
Tech Set Up  
Air Circulation / Merv-13  
Social Distancing Signage  
Hygiene/ Disinfection Sites  
Inc. Cleaning Services  
Outdoor Spaces  
"Closed" Campus

## Academic/CC Program

Safe Campus Capacity  
Rotational Model  
Rapids Remote  
Synchronous & Asynchronous  
PE  
No Contact Sports  
Programming  
Mishmar & Committees

## Students, Faculty, Staff

Health Screening  
Flu Vaccine  
Social Distancing  
Masks Indoors by All  
Limiting Exposure  
Cohort Based on Campus  
Time Outdoors

# ROTATIONAL MODEL/ “Rapids Remote”

---

## Rapids Remote

5-6 Ft Distances

Limited Classroom Use

Integrating Blended Learning

Rapids Remote =

Regular Scheduled Classes

Synchronous & Asynchronous

Student Check-ins

## Rotational Model

**Mondays:** 9th, 10th, 11th grades  
in school & **12th Grade on RR**

**Tuesday:** 9th, 10th, 12th grades in  
school & **11th Grade on RR**

**Wednes:** 10th, 11th, 12th, grades  
in school & **9th Grade on RR**

**Thursday:** 9th, 11th, 12th grades  
in school & **10th Grade on RR**

**Friday: ALL Grades in M!**

## New Meeting Spaces

### On Campus:

Learning Center Rooms

Guidance Meetings

Weekly Assemblies

### On Zoom:

Parent Meetings

Back to School Night

Israel Night



# Student Life & Guidance



## Connections

Shared Grade Experiences

Advisory / Guidance

Check-Ins: Students & Families



## Warmth

Ruach

Bonding

Chesed

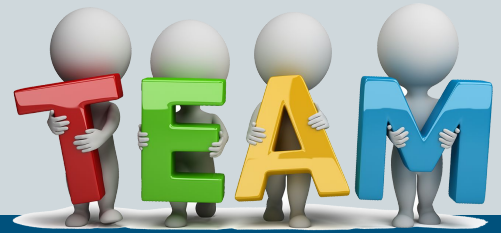


## Acceptance

Broad Needs Assessment

Open Conversations

Tackling Tough Stuff



## Empowerment

Seniors

Student Leaders

Student Buddy System

Student Voice



# Rapids Rising



## Sample Submitted Questions:

Why are we requiring masks at all times indoors?

Masks are uncomfortable. Is uncomfortable learning in person better than comfortable virtual learning?

Please explain “Rapids Remote”

Please explain Synchronous and Asynchronous learning.

Why are we requiring the Flu Vaccine?

Will Shabbaton happen?

What about Athletics?

What's the plan for lunch and davening?

---